

# START YOUR BRISTOL STORY



**INTERNATIONAL  
GUIDE 2024/25**

# BEAUTIFUL BRILLIANT BRISTOL



Contents	Page
Welcome	2
Academic excellence	4
Careers support	6
The city of Bristol	8
A place of possibilities	10
Our Bristol neighbourhood	14
Your home from home	16
Our residences	18
Supporting you	20
Societies and sport	22
Fees and costs	24
Scholarships	25
Entry requirements	26
How to apply	27
Courses and programmes	28
Undergraduate courses	30
Postgraduate taught programmes	38
Postgraduate research programmes	40
Our location	41

9<sup>TH</sup>

in the UK  
QS World University  
Rankings 2024

55<sup>TH</sup>

in the world  
QS World University  
Rankings 2024

5<sup>TH</sup>

in the UK for research  
*THE* analysis of REF 2021

7<sup>TH</sup>

in the UK for employability  
QS Graduate Employability  
Rankings 2022

3<sup>RD</sup>

greenest city centre  
in the UK  
PLOS ONE study 2022

27

subjects highly ranked  
in the world's top 100  
QS World Subject  
Rankings 2023

## Contact us

University of Bristol  
Beacon House  
Queen's Road  
Bristol BS8 1QU, UK

Email: [support@international.bristol.ac.uk](mailto:support@international.bristol.ac.uk)  
Tel: +44 (0)117 205 2644  
WhatsApp: +44 738 561 7841



[bristol.ac.uk/  
international-24](http://bristol.ac.uk/international-24)

# WELCOME TO BRISTOL

**Founded in 1876, the University of Bristol has a global reputation for high-quality education and research.**

Bristol is one of the UK's most popular universities, with a diverse academic community. Over 30,000 undergraduates and postgraduates study here, with almost 10,000 international students from around the world.

As a research-intensive university, we aim to answer some of the world's big questions. Join us to work at the forefront of your subject, learn from expert staff, and get involved with our innovative research.

Bristol is committed to protecting the environment, and sustainability is part of everything we do.

We were the first UK university to declare a climate emergency and aim to become carbon neutral by 2030.

As a Bristol student, you'll live and study in one of Europe's most vibrant, creative cities. Discover exciting opportunities, friendly people and historic architecture in beautiful, brilliant Bristol.



**Find out why our international students love Bristol.**



**'Bristol is a city full of character and life which reminded me of home! I love how vibrant yet cosy it is, with a good balance of city and nature. It is a great research university which has provided me with support and opportunities to propel my aspirations.'**

**Avelina, Hong Kong**  
(BSc Biology)



## 150

**We welcome students from more than 150 countries**

## 28%

**of our students are international**

3

2

# ACADEMIC EXCELLENCE

With its outstanding academic environment and research-led teaching, Bristol is the place to reach your potential.

## Inspired by research

As a member of the Russell Group and the Worldwide Universities Network, Bristol is one of the UK's leading research universities. This innovative research informs all our courses, so you'll learn from the latest discoveries.

See page 28 for a complete list of our degrees.

## Choice and flexibility

We offer more than 600 undergraduate and postgraduate degrees in a wide range of subjects. Many courses allow you to tailor your studies with flexible unit choices. We also run a foundation programme for international students.

These are just three of the latest research stories from Bristol's inspirational students and academics.



Find out more about a groundbreaking new treatment for diabetes



## A revolution for diabetes management?

A research collaboration involving staff, postgraduate students and spinout companies has led to new glucose binding molecules that could transform the management of diabetes. With support from a leading global healthcare company, this technology is being taken forward as a potential new way to treat the condition, which affects millions of people worldwide.



# 94%

of our research is rated 'world-leading' or 'internationally excellent' REF 2021

# 13

Nobel Prize winners associated with the university



## Creating space for change

Twenty years on from the establishment of Guantánamo Bay, our Human Rights Implementation Centre was joined by former inmate Mohamedou Ould Slahi to demand the facility's closure. Detained without charge for over a decade, this brings into sharp focus our work ending torture and inhumane treatment within prison systems.

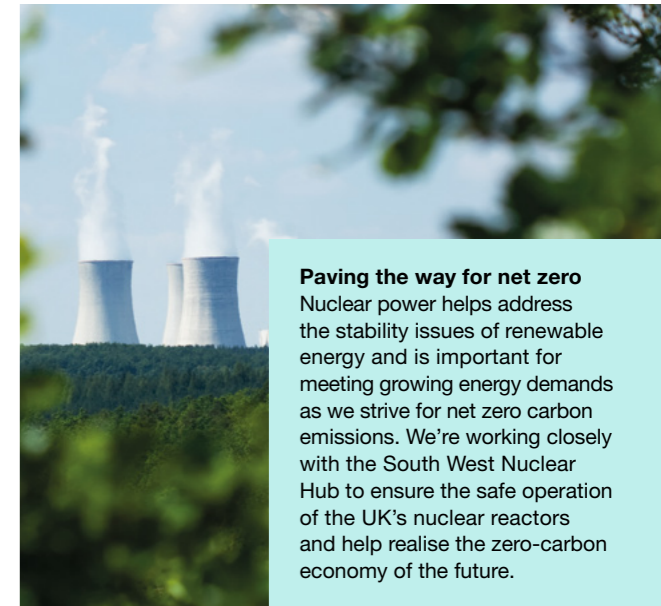
## Invested in our campus

Our city University has you in mind, with 24-hour libraries, state-of-the-art laboratories and specialist equipment. Our Security Service and University Police Officer help keep students safe around the campus.

Most buildings are based in our Clifton campus, near the city centre. Here, our Campus Heart programme is transforming our facilities and creating a vibrant hub for all students to connect, study and relax.

We are also developing a new world-leading campus focused on digital, business and social innovation. Temple Quarter Enterprise Campus will be a space for students, academics, businesses, partners and the local community to work together.

Visit [bristol.ac.uk/temple-quarter-campus](https://bristol.ac.uk/temple-quarter-campus) for more information.



## Paving the way for net zero

Nuclear power helps address the stability issues of renewable energy and is important for meeting growing energy demands as we strive for net zero carbon emissions. We're working closely with the South West Nuclear Hub to ensure the safe operation of the UK's nuclear reactors and help realise the zero-carbon economy of the future.



Find out more about our global research impact [bristol.ac.uk/research](https://bristol.ac.uk/research)

# CAREERS SUPPORT

**Our expert and impartial support will equip you to secure a fulfilling job, set up your own business or progress to further study.**

## Excellent reputation

Bristol graduates are highly regarded by employers in the UK and overseas. The University is ranked joint 7th in the UK for employability in the latest QS Graduate Employability Rankings 2022.

Many of our courses are accredited by professional bodies, societies and institutes, so your degree will be recognised around the globe.

## An international Careers Service

Our Careers Service is here to support you throughout your studies and for up to three years after graduation.

We can help whether you plan to stay in the UK, return home, or work in a third country.

Our year-round programme includes alumni panels, networking opportunities, talks and workshops. You can learn about your visa options for working in the UK, or how to succeed in job markets around the world. We also provide advice and resources for résumé/CV writing, applications, interview preparation and starting your own business.

Over 250 employers engage with our students through presentations, workshops and events every year. Our online portal advertises job vacancies and paid internships.

You can also access Student Circus, a platform to help international

students find sponsored roles in the UK, and jobs in countries around the world.

## Industry insight

Many courses in business, management, engineering, law and health sciences offer professional mentoring schemes, with mentors from across the globe. You could also have the chance to study in industry during your degree.



**Visit our Careers Service blog**  
[bristol.ac.uk/careers-blog](https://bristol.ac.uk/careers-blog)



## Enhance your degree

Alongside your studies, you can work towards the optional Bristol PLUS Award. This programme recognises your development through work experience, volunteering and extracurricular activities. You'll also learn how to communicate your value to employers. The award is endorsed by a range of leading recruiters.

## Overseas experience

You can boost your career prospects by studying, working or volunteering abroad during your studies. Many undergraduate degrees allow you to spend a semester or a full year outside the UK. You could also take part in a shorter summer programme.

# 49<sup>TH</sup>

**in the world for employability**

QS Graduate Employability Rankings 2022

# 4<sup>TH</sup>

**most targeted university by top UK employers**

High Fliers Research 2023

The Centre for Study Abroad team can help you find an opportunity that meets your goals.

Visit [bristol.ac.uk/bristol-abroad](https://bristol.ac.uk/bristol-abroad) to explore your options.

## Become a future founder

Bristol actively encourages the innovators and entrepreneurs of the future. We can help you develop your entrepreneurial skills and pursue your start-up goals. The Basecamp Enterprise team provides guidance, workshops and support to help enhance your networks and build your growth mindset.

## Bristol for life:

### Your alumni connection

There are over 190,000 Bristol alumni living in over 190 countries around the world. When you join Bristol as a student, you can make the most of this incredible community, with access to alumni mentors working in your home country or your chosen career. When you graduate, your own alumni journey begins: from exclusive Bristol alumni events to opportunities to build your professional network, your Bristol alumni connection is for life.

Visit [bristol.ac.uk/bristol-connects](https://bristol.ac.uk/bristol-connects) for more information.



**'I am the first person from my entire community who has studied abroad. Now that I am here, a lot of young people like me are inspired; they are applying for universities abroad. You can change the face of your community by being an example.'**

**Vivek, India Global climate change advocate** (MSc Environmental Policy and Management graduate and Think Big scholar)

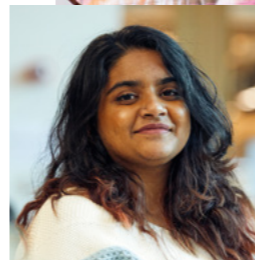


**Hear more about Vivek's 'plogging' initiative and environmental work**



**'Travelling to the UK wasn't easy, but as soon as I arrived in Bristol everything changed. The warm welcome people gave me altered my perspective in a positive way. I have gained some incredible friends from the UK and across the world.'**

Paulina, Mexico (BSc Biology)



**'The city of Bristol helped me continue my creative journey with its museums, shows and street art.'**

Lalitha, Singapore  
(MSc Education: Neuroscience and Education)



Hear more about  
Paulina, Lalitha and our  
other student stories  
[bristol.ac.uk/study/stories](https://bristol.ac.uk/study/stories)

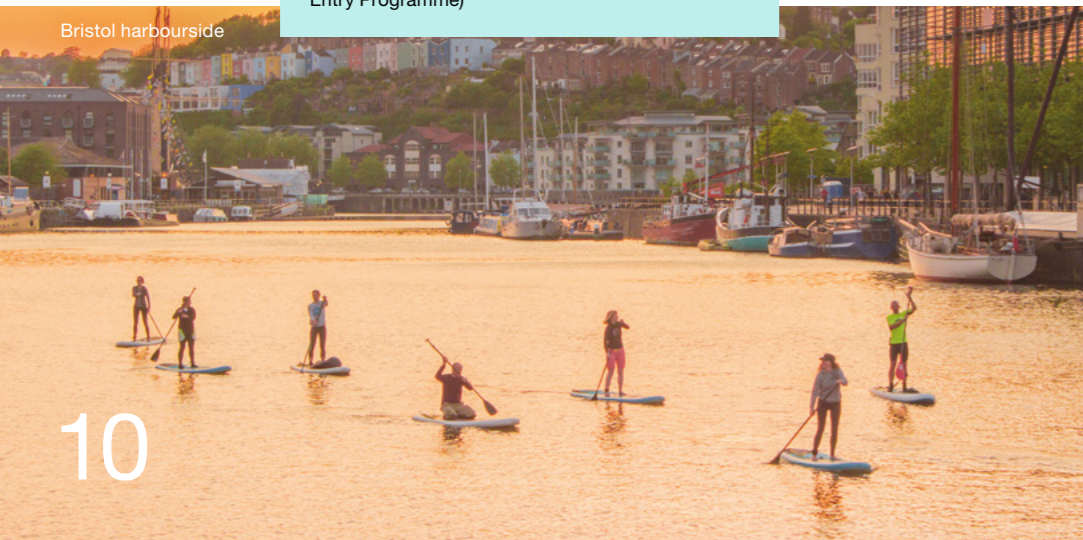
# A PLACE OF POSSIBILITIES



**‘Bristol is such a diverse and colourful city! There is a great mix of beautiful historic and new buildings and sights.’**

**Natasha, Canada**  
(BVSc Veterinary Science: Accelerated Graduate Entry Programme)

Bristol harbourside



10



Cargo, Wapping Wharf

# 450

**gardens, parks and nature reserves**

# 187

**countries represented in the city of Bristol's community**

**The city of Bristol is a creative, inspiring place where everyone is welcome. Located in south-west England, it's the UK's 8th largest city.\***

Bristol has all the vibrant energy of a big city, but its friendly, relaxed atmosphere will help you feel at home. Our campus is near the centre of Bristol, so you can enjoy everything the city has to offer.

### **A welcoming community**

We're proud of our multicultural community. The city is home to people from more than 187 countries, speaking 91 languages, with at least 45 religions.\*\* A huge range of restaurants, shops and markets offer delicious food from around the world. Plenty of vegetarian and halal options are available – and Bristol has been named the world's top vegan city.\*\*\*

### **Safety first**

Bristol has received the prestigious Purple Flag award for 12 years in a row. This means Bristol city centre is a safe and welcoming place to enjoy a night out.

### **Something for everyone**

As a Bristol student, you can enjoy the best of British culture from day to night. Find exciting events, exhibitions and festivals happening every day. Visit eclectic venues to enjoy all kinds of music, theatre and film. Or experience historic sites and famous architecture, like the Clifton Suspension Bridge.

It's easy to explore Bristol's different neighbourhoods by walking or cycling. Discover colourful graffiti, hidden spots and beautiful views around every corner. If you want to step out of the busy city, there are more than 450 gardens, parks and nature reserves all over town.

### **A greener future**

Bristol is a green city that shares our commitment to protecting the environment. It's a former European Green Capital and the UK's first cycling city, and aims to become carbon neutral by 2030.

\*Primary Urban Area, [centreforcities.org](http://centreforcities.org) 2021

\*\*Bristol City Council 2022

\*\*\*Chef's Pencil, 2020

**‘There are always fascinating cultural events happening, with so much opportunity to explore and discover the city.’**

**Savannah, South Africa**  
(BA Liberal Arts)



Bristol Balloon Fiesta



Bristol Comedy Garden

### **Explore our festival scene**

Bristol's festivals are world famous. From music and comedy to food and drink, and even hot air balloons, there's always something to celebrate in Bristol. Find out what's on...



[visitbristol.co.uk/whats-on/festivals](http://visitbristol.co.uk/whats-on/festivals)

12



13



Explore Bristol with  
our virtual tour  
[bristol.ac.uk/  
virtual-tour](https://bristol.ac.uk/virtual-tour)

# OUR BRISTOL NEIGHBOURHOOD

15

## 1 Clifton campus

Our main campus is home to study lounges, libraries, gardens, cafés, a sports centre and the Global Lounge. There's plenty of space to study, socialise or relax.

## 2 Langford campus (not shown on map)

Bristol Veterinary School is 14 miles south of the city on its own countryside campus.

## 3 Temple Quarter Enterprise Campus (not shown on map)

Work has started on our ambitious new campus, which is part of one of Europe's biggest urban regeneration programmes.

## 4 Wapping Wharf

Discover exciting restaurants in converted shipping containers in this up-and-coming area.

🕒 30 minutes

## 5 Harbourside

The harbourside is buzzing with restaurants and bars, an independent cinema, and weekly markets. Come here to relax by the water.

🕒 15 minutes

## 6 Cabot Tower

Take in the view from the top of Cabot Tower, or relax with friends in Brandon Hill park.

🕒 10 minutes

## 7 Clifton Village

Clifton is a picturesque area full of Georgian and Regency architecture. Pick up a treat at one of the independent cafés, shops and delis, or visit the famous Clifton Suspension Bridge.

🕒 15 minutes

## 8 Park Street

Browse the shops on Park Street during a study break. At the top is the Wills Memorial Building, home to our graduation ceremonies.

🕒 5 minutes

## 9 Stokes Croft (not shown on map)

Explore the streets of Stokes Croft for colourful murals, good food and new music.

🕒 15 minutes

## Our Student Residential Villages

See page 16 for more information about your accommodation options.

## 10 East Residential Village

🕒 15 minutes

## 11 West Residential Village

🕒 15 minutes

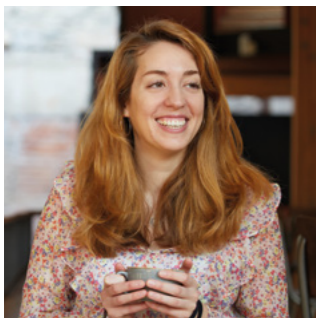
## 12 North Residential Village (not shown on map)

🕒 40 minutes, or 20 minute  
bus journey

🕒 **Approximate walking times  
from the main Clifton campus**

# YOUR HOME FROM HOME

As an international student, your first-year accommodation will be an important part of your experience. From university halls to private housing, our university accommodation team will be on hand to support you to settle into UK life and feel part of the student community.



**'I liked having the chance to choose people similar to me to live with, by completing a short questionnaire about my tastes and ways of doing things before arriving at Bristol. It's enjoyable to have flatmates on the same wavelength as me.'**

Gala, Spain (MEng Aerospace Engineering)

## Our accommodation guarantee

We guarantee to make you an offer of University accommodation, as long as you meet the criteria and deadline. Find out more on our website [bristol.ac.uk/accommodation-guarantee](https://bristol.ac.uk/accommodation-guarantee)



## A variety of residences

Our University accommodation is grouped into three Residential Villages: North, East and West Village.

We offer a range of self-catered and catered accommodation. Self-catered residences have kitchen facilities so you can cook your own meals. Catered residences have dining halls that provide two meals a day. All rooms are furnished, with either an en suite or a shared bathroom. Each residence provides free internet and 24-hour security. Find out more at [bristol.ac.uk/accommodation/about/residences](https://bristol.ac.uk/accommodation/about/residences)



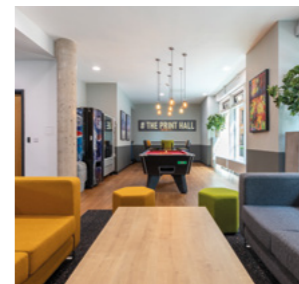
Clifton Hill House

## Security and support

Our University accommodation is a safe and supportive environment, where you can make new friends, experience new things, and feel part of our vibrant student community.

Each Residential Village has a Student Support Centre. The Residential Life team can provide expert help, support and advice 24 hours a day, seven days a week.

Each residence also has a Chief Resident and Senior Residents who live alongside students. They provide pastoral support and can help with any personal problems.



Social room in Print Hall

## Social life and sports

Each residence has a social committee run by students, which organises a range of social events, fun activities and sporting leagues, for all abilities. Students living in University accommodation can also join free exercise classes in the B:Active Residences programme.

**Accommodation costs**  
The accommodation fee you pay depends on the type of room you have and the facilities in your residence such as common rooms, study spaces, sports facilities, or any other enhancement. Your accommodation fee includes electricity, gas and water bills, internet, a social fund contribution and basic contents insurance. Undergraduate students also receive a bus pass for our UniBus service.

Accommodation costs for the 2023/24 academic year can be found at [bristol.ac.uk/accommodation/about/costs](https://bristol.ac.uk/accommodation/about/costs)



Hiatt Baker Hall

# OUR RESIDENCES

We have a wide variety of residences around the city of Bristol. Here are just a few options.



- Print Hall**
- East Residential Village
  - Postgraduate and undergraduate residence
  - 489 places
  - Self-catered
  - 1.3 miles to campus
  - From £7,997 per year



- Manor Hall**
- West Residential Village
  - Postgraduate and undergraduate residence
  - 223 places
  - Self-catered
  - 0.7 miles to campus
  - From £3,990 per year



- Wills Hall**
- North Residential Village
  - Undergraduate residence
  - 323 places
  - Catered
  - 1.8 miles to campus
  - From £6,909 per year

These fees are per person and based on 2023/24 rates. Figures rounded to nearest pound.

## Accommodation costs 2023/24

Accommodation type	Cost range*	Contract length
Undergraduate catered	£6,910 – £11,760	38 – 42 weeks
Undergraduate self-catered	£3,990 – £9,849	38 – 42 weeks
Postgraduate self-catered	£5,056 – £15,280	50 – 51 weeks

\*Information correct from July 2023, please visit [bristol.ac.uk/accommodation](https://bristol.ac.uk/accommodation) for most up to date information.



Find the right accommodation for you by watching our student guides to each Residential Village [bristol.ac.uk/accommodation-videos](https://bristol.ac.uk/accommodation-videos)



**East Residential Village**  
East Village residences are located around Bristol city centre, within close walking distance of the main campus. Students living here have easy access to a huge range of shops, cafés and restaurants. You're also near to the harbourside, a popular area for cultural events and nights out.



**West Residential Village**  
These residences are mostly based in and around Clifton, a popular suburb of Bristol with traditional architecture, café culture and green spaces. Clifton has a combination of busy shopping streets and quiet residential areas. Most West Village accommodation is around 15 minutes walk from the main campus.



**North Residential Village**  
North Village is in the Stoke Bishop area of Bristol, around 2 miles from the main campus. The site includes large gardens and space for socialising and relaxing. It houses most of our catered residences and is near the Coombe Dingle Sports Complex. A dedicated bus service links North Village with the campus and city centre.



**Clifton campus**  
Our University is integrated into the city. Most student buildings sit together on our Clifton campus, so you can easily walk or cycle between lecture theatres and libraries. Regular buses connect the campus to other parts of the city.

# SUPPORTING YOU

**We want you to make the most of your time at Bristol. Our student services are here to support all aspects of university life.**

## Global Lounge

The Global Lounge is a cultural hub at the heart of campus. It's a place for all students to connect, learn from each other and find out about global opportunities. Regular social events and activities celebrate different cultures and strengthen our diverse community. Find out what's on at [bristol.ac.uk/global-lounge](https://bristol.ac.uk/global-lounge)

## A warm welcome

Every September, our Global Lounge runs an exciting welcome programme focusing on international students. It's a great opportunity to meet other new students from both the UK and around the world, and to get your questions answered.

## Academic support

Most taught students will have a personal tutor. Your tutor will meet with you often, provide pastoral and academic support, and direct you to specialist services. Research students will receive similar support through their supervisor.

Our Study Skills service provides support to help you in your classes, with resources and sessions both in-person and online. Many degrees also offer subject-specific courses to develop your academic language and literacy. Try out our resources at [bristol.ac.uk/studyskills](https://bristol.ac.uk/studyskills)



## Visas

If you are not a British or Irish citizen, you will most likely need to apply for a visa to come to the UK to study.

Our dedicated Student Visas team can help you with your visa, both before you arrive and during your studies. They can also advise on the Graduate Route visa, which could allow you to stay in the UK for 2 or 3 years after your studies. Our comprehensive webpages and friendly visa advisers can offer immigration information and professional, confidential advice. The latest guidance is available at [bristol.ac.uk/visas](https://bristol.ac.uk/visas)

## Healthcare

Most international students can access medical care through the National Health Service (NHS). The University has a full NHS doctors' practice, and there are other doctors' practices across Bristol. For more information, visit [bristol.ac.uk/students-health/international-students](https://bristol.ac.uk/students-health/international-students)

## Wellbeing support

You can access the support you need by completing our Request for Support Form. All our support services are free and confidential. Find out more at [bristol.ac.uk/wellbeing](https://bristol.ac.uk/wellbeing)

## Disability Services and mental health support

Our Disability Services team provides information and advice on support available at the University. The team supports students who are disabled or neurodiverse with diagnoses such as specific learning difficulties, ADHD, autism, mental health difficulties and physical or sensory impairments. If you have any of these, we encourage you to let us know before you arrive. This is so that we can help you find information about the support available and how to access it. Find out more at [bristol.ac.uk/disability-services](https://bristol.ac.uk/disability-services)

## Religion, faith and spirituality

The Multifaith Chaplaincy is a welcoming space for students of all faiths and no faith. It offers pastoral and spiritual support, religious information and advice, and regular events. See [bristol.ac.uk/chaplaincy](https://bristol.ac.uk/chaplaincy)

## Support if you have children

We have a subsidised day nursery on the main campus, open during weekdays throughout the year. The nursery can accommodate children from three months to five years old. Visit [bristol.ac.uk/nursery](https://bristol.ac.uk/nursery)

## University Mental Health Charter Award

In 2022, Bristol became one of the first universities to receive this award, recognising our approach to improving mental health and wellbeing across the whole community.



**'I have found the University to be a welcoming and supportive learning environment. There are dedicated staff, and a range of support services available to students creating a dynamic and engaging atmosphere for learning.'**

**Kamna, India**  
(MSc Management: Marketing)

# SOCIETIES AND SPORT



22

**‘Being away from home, it’s nice to be with people who can make you feel less homesick. Everyone in the Malaysian Cultural Society is nice and the events are always wholesome.’**

**Zarif, Malaysia**  
(BSc Economics and Accounting)



**With more than 350 student groups for all interests, everyone can belong at Bristol.**

**Led by students, for students**  
Every student is a member of the Bristol Students’ Union. Bristol SU is led by student representatives elected by you, including an International Students’ Officer, who campaign, advocate and ensure students remain at the heart of everything the University does. The Bristol SU also offers confidential academic advice and places to socialise and relax on campus.

**350+**  
clubs and societies

## **Pursue your passions**

Bristol SU supports hundreds of student-run, interest-based clubs and societies. We’ve got everything from photography to baking and gardening to skydiving. There are more than 50 country-specific and religious societies – a great way to share your culture and feel closer to home.

Find your student group at  
[bristolsu.org.uk/groups](https://bristolsu.org.uk/groups)

## **Student networks**

Bristol SU networks are a way for students to build communities and create change. The International Students’ Network brings overseas students together through socials, campaigns and forums. Our other networks include the Sustainability Network, LGBT+ Network and Multifaith Network.

## **Sport, exercise and health**

Bristol’s excellent sport and fitness facilities can help you stay active and healthy. Facilities on campus include a two-floor gym, fitness class studios, double-sided sports hall and a 25m competition length swimming pool. Just on the edge of the city, our Coombe Dingle Sports Complex features a large indoor tennis centre as well as outdoor courts and pitches for tennis, netball, lacrosse, hockey, rugby, football and more.

You can play sport socially or competitively, either by trying one of our free student-only B:Active sessions, or by joining one of 70 sports clubs supported by Bristol SU. Student athletes who play sport professionally can continue to develop alongside their studies with the support of our extensive performance programme.

For more information, visit  
[bristol.ac.uk/sport](https://bristol.ac.uk/sport)

## **Volunteering**

Volunteering is a great way to build confidence, develop your skills and make a positive impact in the community. It’s easy to get involved and there’s a huge range of opportunities whether you want to commit your time regularly or take part in a one-off volunteering day. Choose a student-led project or work with charities and community groups across the city and beyond. To find out more, visit [bristolsu.org.uk/volunteering](https://bristolsu.org.uk/volunteering)



Explore Bristol SU at  
[bristolsu.org.uk](https://bristolsu.org.uk)

# FEES AND COSTS

Find out the costs of studying and living in Bristol.

## Tuition fees

Tuition fees will depend on your course and your fee status. You can find international tuition fees (including EU) for the academic year 2024/25 in the following table.

Fees are reviewed every year and are not fixed for the duration of your studies. You should budget for an annual increase of up to 8% (this does not apply to undergraduate courses in medicine, dentistry and veterinary science).

For the latest information about tuition fees, visit [bristol.ac.uk/tuition-fees](https://bristol.ac.uk/tuition-fees)

## Foundation and pre-session programme fees

Programme	Annual tuition fee 2024/25	Deposit
International Foundation Programme – Arts and Humanities	£25,200	£2,000
International Foundation Programme – Dentistry	£26,200	£2,000
International Foundation Programme – Science, Technology, Engineering and Mathematics	£26,200	£2,000
International Foundation Programme – Social Sciences and Law	£25,200	£2,000
Pre-session English language courses	£3,380 to £5,520	None†

†To secure your place on a pre-session course, you will be required to pay your full tuition fee as a deposit. Pre-session fees are refundable in full within 14 days of original payment. After this period, no refunds will be made for students withdrawing from study.

## Undergraduate course fees

Course	Annual tuition fee 2024/25	Deposit
Arts-based subjects	£23,900 to £26,400	None
Science-based subjects	£29,300 to £31,300	None
BDS Dentistry	£46,500	None
MB ChB Medicine	£42,800	None
BVSc Veterinary Science	£39,200	None

## Postgraduate programme fees

Tuition fees vary depending on degree. Search for your programme online at [bristol.ac.uk/postgraduate](https://bristol.ac.uk/postgraduate). A deposit of £2,000 may be required.

## Cost of living

You can live well in Bristol for less than in London. The cost of living (including rent) is around 32% lower than in the capital.\*

For advice about student living costs, visit [bristol.ac.uk/living-expenses](https://bristol.ac.uk/living-expenses)

Grocery item	Typical cost*
1 litre milk	£1.13
1.5 litre bottled water	£1.04
1kg of onions	£0.97
1kg of bananas	£1.23
1kg of white rice	£1.61
1kg of potatoes	£1.42
12 eggs	£2.57
Cappuccino in a café	£3.31

\*numbeo.com, June 2023

# THINK BIG SCHOLARSHIPS

We have a range of scholarships that can help fund your studies, as well as exclusive development opportunities for scholars.

## Think Big at Bristol

Our Think Big programme offers a range of scholarships for international students, including those from the EU.

For 2024, we are investing £3 million into our Think Big international scholarships.

Scholarships are available for eligible postgraduate master’s programmes and undergraduate courses (excluding clinical courses).

## Think Big Development Programme

As well as receiving financial support, Think Big scholarship winners have the opportunity to take part in our Think Big Development Programme. Exclusive to University of Bristol scholars, the programme aims to increase your confidence and employability, giving you the springboard you need to fulfil your potential and excel in your chosen field.

Our tailored framework will help you to develop holistically and cultivate core skills with a practical, straightforward approach. It also gives you the opportunity to network and build a community with other enthusiastic scholars. Of our past scholars, 96% felt that the skills they developed will help them transition to the next chapter of their lives.

Find out more at [bristol.ac.uk/international-scholarships](https://bristol.ac.uk/international-scholarships)

## More funding

Other financial support may be available to help fund your studies. This includes a range of scholarships with our external partners. To find out more and check your eligibility, use our online funding search tool at [bristol.ac.uk/scholarships](https://bristol.ac.uk/scholarships)



‘The Think Big Scholarship was a life-changing opportunity: a chance to meaningfully contribute my effort to the development of my country through the knowledge and experience obtained from the University of Bristol.’

Davit, Georgia  
(MSc Public Policy)

# ENTRY REQUIREMENTS

**We accept a wide range of qualifications and assess every application on individual merit.**

## **International qualifications**

You can find detailed information about accepted international qualifications online. Find your country at [bristol.ac.uk/international/countries](https://bristol.ac.uk/international/countries)

Our summer pre-session courses offer the best possible preparation for your studies. We also run a one-year International Foundation Programme (IFP) for undergraduates. You can take the IFP before your degree if you don't quite meet the requirements for direct entry.

Find out more at [bristol.ac.uk/academic-language](https://bristol.ac.uk/academic-language)

## **English language requirements**

International applicants need to have a good standard of English to study at Bristol. Different courses need different language levels, called profiles. You can find the language profile needed for each course on our online course listings.

You do not need to have the required English language profile before you apply. If you don't yet have the required qualifications, we will ask for these as part of your offer.

Find details of each English language profile and accepted qualifications at [bristol.ac.uk/study/language-requirements](https://bristol.ac.uk/study/language-requirements)

## **Education agents**

Bristol has agreements with various education representatives, or agents, around the world. Using an agent does not put you at an advantage or disadvantage when applying. Find a list of our agents in your country at [bristol.ac.uk/international/countries](https://bristol.ac.uk/international/countries)

## **Other requirements**

For some courses, you need to have studied specific subjects or take an admissions test. These requirements will be listed on the online course page.

## **Mature students**

A mature student is aged 21 or above when they start their undergraduate degree. We welcome applications from mature students and provide dedicated support. Find out about applying as a mature student at [bristol.ac.uk/mature](https://bristol.ac.uk/mature)



**View entry requirements for your country at [bristol.ac.uk/international/countries](https://bristol.ac.uk/international/countries)**

# HOW TO APPLY

**From exploring the University to receiving an offer, find out more about your student journey.**

## **Events and visits**

Our friendly staff attend education events worldwide. You can also explore Bristol from home with our virtual tour and online events. Find out more at [bristol.ac.uk/international-visits](https://bristol.ac.uk/international-visits)

## **How to apply International Foundation Programme**

Applicants based in mainland China should apply through our China Office. Other applicants should apply through Kaplan International Pathways, our recruitment and admissions partner. Find out how at [bristol.ac.uk/ifp-apply](https://bristol.ac.uk/ifp-apply)

## **Undergraduate courses**

Most applicants should apply through the Universities and Colleges Admissions Service (UCAS). Our UCAS institution code is BRISL B78. For more details and exceptions, see [bristol.ac.uk/international-ug-apply](https://bristol.ac.uk/international-ug-apply)

## **Postgraduate programmes**

Apply using our online application form at [bristol.ac.uk/pg-apply](https://bristol.ac.uk/pg-apply)

If you are a postgraduate research applicant, you may need to propose your own area of study. You can find out what your research proposal should contain on the online course pages. You can also search for a potential supervisor on your course page. We recommend emailing your chosen supervisor to discuss your proposal before applying.

## **Deadlines**

Some courses have application deadlines. Check the deadline for your degree on our online course pages.

Bear in mind that some scholarships will have their own application deadlines. You often need to apply for your chosen degree before you can apply for funding.

## **Offer types**

A conditional offer means you need to achieve specified grades to take up your place. This may include English language requirements. An unconditional offer means you have already met all the academic requirements.

## **How we assess your application**

Our admissions statements contain important information about how we assess applications. We publish admissions statements for every course on the online course pages. Updated statements for 2024 entry will be available in summer 2023.

# COURSES AND PROGRAMMES

We offer hundreds of courses and programmes across a range of levels. Find out more about our degrees.

## Undergraduate courses

Undergraduate courses usually lead to a bachelor's degree (such as BA, BSc or LLB). We offer single honours and joint honours courses, so you can study one or two subjects.

Most undergraduate courses take three years of full-time study. Some degrees include an extra year abroad or in industry. In many subjects you can choose a four-year course that leads to a master's degree (such as MEng or MSci). Dentistry, medicine and veterinary science degrees usually take five years.

## Postgraduate taught programmes

Postgraduate taught programmes lead to a master's degree (such as MA, MSc, MRes or LLM). They combine taught units with a research project, and usually take one year of full-time study. We also offer Postgraduate Diplomas (PGDip) and Certificates (PGCert) in some subjects.

## Postgraduate research programmes

A postgraduate research degree is also known as a doctoral programme. Doctoral students conduct original research under the supervision of academic experts.

- A Doctor of Philosophy (PhD) is the most common research degree. This usually takes three to four years of full-time study.

- We also offer one-year or two-year master's by research degrees (such as MScR, MPhil or MMus). These include a structured research project.

- Professional doctorates (such as EdD, EngD, DEdPsych or MD) are for those who are already qualified to an advanced level. If you are a specialist in your field, these can help you to deepen your knowledge.

## Pre-sessional and foundation courses

A summer pre-sessional course will provide the academic communication skills you need to succeed. It can also help you meet the language requirements of your chosen programme.

Our one-year International Foundation Programme can be taken before starting an undergraduate degree. You will develop both your academic and language ability through tailored subject-specific pathways, which prepare you for the undergraduate degree of your choice.

## Intercalated courses

Current medical, dental and veterinary students can apply to intercalate at Bristol. You will complete an extra degree in an intensive year away from your normal studies.

600+

courses and programmes

## Pre-sessional courses

Search for a pre-sessional course at [bristol.ac.uk/academic-language/study](https://bristol.ac.uk/academic-language/study)

## International Foundation Programme

Find out more about an International Foundation Programme at [bristol.ac.uk/ifp](https://bristol.ac.uk/ifp)

Programme	Duration
Arts and Humanities pathway	1 year
Dentistry pathway	1 year
Science, Technology, Engineering and Mathematics pathway	1 year
Social Sciences and Law pathway	1 year

## Intercalated degrees

Search for an intercalated degree at [bristol.ac.uk/intercalate](https://bristol.ac.uk/intercalate)

## Standalone courses:

Bioethics (BSc)
Child Health Research (BSc)
Clinical Sciences (BSc)
Epidemiology (MSc)
Functional and Clinical Anatomy (BSc)
Global Health (BSc)
Global Wildlife Health and Conservation (MSc)
Health, Law and Society (LLM)
Health Sciences Research (MRes)
Health Sciences Research (Renal) (MRes)
Health Sciences Research (Translational Cardiovascular Medicine) (MRes)
Medical Humanities (BA)
Public Health (MSc)
Translational Cardiovascular Medicine (MSc)

## One-year entry onto three-year courses:

Biochemistry with Medical Biochemistry (BSc)
Cancer Biology and Immunology (BSc)
Cellular and Molecular Medicine (BSc)
Childhood Studies (BSc)
Medical Microbiology (BSc)
Social Policy (BSc)
Virology and Immunology (BSc)
Zoology (BSc)

UNDERGRADUATE COURSES

Search for an undergraduate course at [bristol.ac.uk/undergraduate](http://bristol.ac.uk/undergraduate)

Course	UCAS code	Length	Typical A-level offer	Typical IB offer
ACCOUNTING AND FINANCE				
BSc Accounting and Finance	NN43	3 years	AAA	36
BSc Accounting and Finance with Professional Placement	†	4 years	AAA	36
BSc Accounting and Finance with Study Abroad	NN46	4 years	AAA	36
BSc Accounting and Management	NN42	3 years	AAA	36
BSc Accounting and Management with Professional Placement	†	4 years	AAA	36
BSc Accounting and Management with Study Abroad	NN45	4 years	AAA	36
BSc Economics and Accounting	LN14	3 years	AAA	36
BSc Economics and Accounting with Professional Placement	†	4 years	AAA	36
BSc Economics and Accounting with Study Abroad	LN16	4 years	AAA	36
BSc Economics and Finance	LN13	3 years	AAA	36
BSc Economics and Finance with Study Abroad	LN15	4 years	AAA	36
BSc Finance	N300	3 years	AAA	36

Course	UCAS code	Length	Typical A-level offer	Typical IB offer
AEROSPACE ENGINEERING				
BEng Aerospace Engineering	H405	3 years	A*AA	38
BEng Aerospace Engineering with a Year in Industry	†	4 years	A*AA	38
MEng Aerospace Engineering	H410	4 years	A*AA	38
MEng Aerospace Engineering with a Year in Industry	†	5 years	A*AA	38
MEng Aerospace Engineering with Study Abroad	†	4 years	A*AA	38
ANCIENT HISTORY				
BA Ancient History	V110	3 years	AAB	34
ANTHROPOLOGY AND ARCHAEOLOGY				
BA Anthropology	XD49	3 years	AAB	34
BA Archaeology and Anthropology	VL46	3 years	AAB	34
MArts Anthropology with Innovation	XD50	4 years	AAB	34
APPLIED ANATOMY				
BSc Applied Anatomy	B112	3 years	ABB	32
BIOCHEMISTRY				
BSc Biochemistry	C700	3 years	AAA	36
BSc Biochemistry with Medical Biochemistry	C720	3 years	AAA	36
BSc Biochemistry with Molecular Biology and Biotechnology	C790	3 years	AAA	36
BSc Biochemistry with Study in Industry	†	4 years	AAA	36
MSci Biochemistry	C701	4 years	AAA	36
MSci Biochemistry with Medical Biochemistry	C721	4 years	AAA	36
MSci Biochemistry with Molecular Biology and Biotechnology	C791	4 years	AAA	36

Course	UCAS code	Length	Typical A-level offer	Typical IB offer
BIOLOGICAL SCIENCES				
BSc Biology	C100	3 years	AAA	36
BSc Biology with Professional Placement	†	4 years	AAA	36
BSc Plant Sciences	C201	3 years	AAA	36
BSc Plant Sciences with Professional Placement	†	4 years	AAA	36
BSc Zoology	C300	3 years	AAA	36
BSc Zoology with Professional Placement	†	4 years	AAA	36
MSci Biology	C103	4 years	AAA	36
MSci Biology with Professional Placement	†	5 years	AAA	36
MSci Plant Sciences	C203	4 years	AAA	36
MSci Plant Sciences with Professional Placement	†	5 years	AAA	36
MSci Zoology	C303	4 years	AAA	36
MSci Zoology with Professional Placement	†	5 years	AAA	36
BIOMEDICAL SCIENCES				
BSc Biomedical Sciences	B900	3 years	AAA	36
BUSINESS AND MANAGEMENT				
BSc Accounting and Management	NN42	3 years	AAA	36
BSc Accounting and Management with Professional Placement	†	4 years	AAA	36
BSc Accounting and Management with Study Abroad	NN45	4 years	AAA	36
BSc Business Analytics	N100	3 years	AAA	36
BSc Business and Management	N200	3 years	AAA	36
BSc Business and Management with Study Abroad	N201	4 years	AAA	36
BSc Business and Management with Study Abroad in a Modern Language	4H56	4 years	AAA	36

Course	UCAS code	Length	Typical A-level offer	Typical IB offer
BSc Economics and Management	LN12	3 years	AAA	36
BSc Economics and Management with Study Abroad	LN17	4 years	AAA	36
BSc International Business Management	N120	3 years	AAA	36
BSc International Business Management with Study Abroad	N121	4 years	AAA	36
International Business Management with Study Abroad in a Modern Language	N122	4 years	AAA	36
CELLULAR AND MOLECULAR MEDICINE				
BSc Cancer Biology and Immunology	B131	3 years	AAB	34
BSc Cancer Biology and Immunology with Study in Industry	†	4 years	AAB	34
BSc Cellular and Molecular Medicine	B130	3 years	AAB	34
BSc Cellular and Molecular Medicine with Study in Industry	†	4 years	AAB	34
BSc Medical Microbiology	C521	3 years	AAB	34
BSc Medical Microbiology with Study in Industry	†	4 years	AAB	34
BSc Virology and Immunology	C540	3 years	AAB	34
BSc Virology and Immunology with Study in Industry	†	4 years	AAB	34
MSci Cancer Biology and Immunology	B132	4 years	AAB	34
MSci Cellular and Molecular Medicine	B133	4 years	AAB	34
MSci Medical Microbiology	C522	4 years	AAB	34
MSci Virology and Immunology	C541	4 years	AAB	34

Course	UCAS code	Length	Typical A-level offer	Typical IB offer
CHEMICAL PHYSICS				
BSc Chemical Physics	F320	3 years	AAA	36
MSci Chemical Physics	F322	4 years	A*AA	38
MSci Chemical Physics with Industrial Experience	F323	4 years	A*AA	38
CHEMISTRY				
BSc Chemistry	F100	3 years	AAA	36
MSci Chemistry	F103	4 years	A*AA	38
MSci Chemistry with Industrial Experience	F105	4 years	A*AA	38
MSci Chemistry with Study Abroad	F107	4 years	A*AA	38
MSci Chemistry with Study Abroad in a Modern Language	F104	4 years	A*AA	38
CHEMISTRY WITH COMPUTING				
BSc Chemistry with Computing	F130	3 years	AAA	36
MSci Chemistry with Computing	F131	4 years	A*AA	38
CHILDHOOD STUDIES				
BSc Childhood Studies	L520	3 years	ABB	32
BSc Childhood Studies with Study Abroad	L525	4 years	ABB	32
BSc Childhood Studies with Quantitative Research Methods	L522	3 years	ABB	32
MSci Childhood Studies with Innovation	L526	4 years	ABB	32
MSci Childhood Studies with Quantitative Research Methods	L523	4 years	ABB	32
CIVIL ENGINEERING				
BEng Civil Engineering	H205	3 years	A*AA	38
BEng Civil Engineering with a Year in Industy	†	4 years	A*AA	38
MEng Civil Engineering	H200	4 years	A*AA	38
MEng Civil Engineering with a Year in Industry	†	5 years	A*AA	38
MEng Civil Engineering with Study Abroad	†	4 years	A*AA	38

Course	UCAS code	Length	Typical A-level offer	Typical IB offer
CLASSICAL STUDIES				
BA Classical Studies	Q810	3 years	AAB	34
BA English and Classical Studies	QQ38	3 years	AAA	36
CLASSICS				
BA Classics	Q800	3 years	AAB	34
COMPARATIVE LITERATURES AND CULTURES				
BA Comparative Literatures and Cultures	Q200	3 years	AAB	34
BA Comparative Literatures and Cultures and French	QR38	4 years	ABB	32
BA Comparative Literatures and Cultures and German	QR40	4 years	ABB	32
BA Comparative Literatures and Cultures and Italian	QR41	4 years	ABB	32
BA Comparative Literatures and Cultures and Portuguese	QR42	4 years	ABB	32
BA Comparative Literatures and Cultures and Russian	QR43	4 years	ABB	32
BA Comparative Literatures and Cultures and Spanish	QR39	4 years	ABB	32

Course	UCAS code	Length	Typical A-level offer	Typical IB offer
<b>COMPUTER SCIENCE</b>				
<b>BSc Computer Science</b>	G400	3 years	A*AA	38
<b>BSc Mathematics and Computer Science</b>	GG14	3 years	A*A*A	40
<b>MEng Computer Science</b>	G403	4 years	A*AA	38
<b>MEng Computer Science with Study Abroad</b>	†	4 years	A*AA	38
<b>MEng Computer Science with Innovation</b>	G404	4 years	A*AA	38
<b>MEng Mathematics and Computer Science</b>	GG1K	4 years	A*A*A	40
<b>CRIMINOLOGY</b>				
<b>BSc Criminology</b>	M900	3 years	AAB	34
<b>BSc Criminology with Quantitative Research Methods</b>	M902	3 years	AAB	34
<b>BSc Criminology with Study Abroad</b>	M901	4 years	AAB	34
<b>BSc Social Policy with Criminology</b>	LM49	3 years	AAB	34
<b>MSc Criminology with Quantitative Research Methods</b>	M903	4 years	AAB	34
<b>DENTAL HYGIENE AND THERAPY</b>				
<b>BSc Dental Hygiene and Therapy</b>	B750	3 years	ABB	32
<b>DENTISTRY</b>				
<b>BDS Dentistry</b>	A206	5 years	AAA	36
<b>ECONOMICS</b>				
<b>BSc Economics</b>	L100	3 years	A*AA	38
<b>BSc Economics and Accounting</b>	LN14	3 years	AAA	36
<b>BSc Economics and Accounting with Professional Placement</b>	†	4 years	AAA	36
<b>BSc Economics and Accounting with Study Abroad</b>	LN16	4 years	AAA	36

Course	UCAS code	Length	Typical A-level offer	Typical IB offer
<b>BSc Economics and Econometrics</b>	L140	3 years	A*AA	38
<b>BSc Economics and Econometrics with Study Abroad</b>	L142	4 years	A*AA	38
<b>BSc Economics and Finance</b>	LN13	3 years	AAA	36
<b>BSc Economics and Finance with Study Abroad</b>	LN15	4 years	AAA	36
<b>BSc Economics and Management</b>	LN12	3 years	AAA	36
<b>BSc Economics and Management with Study Abroad</b>	LN17	4 years	AAA	36
<b>BSc Economics and Mathematics</b>	LG11	3 years	A*A*A	40
<b>BSc Economics and Politics</b>	LL12	3 years	AAA	36
<b>BSc Economics and Politics with Study Abroad</b>	LL14	4 years	AAA	36
<b>BSc Economics with Study Abroad</b>	L105	4 years	A*AA	38
<b>BSc Economics with Study Abroad in a Modern Language</b>	L101	4 years	A*AA	38
<b>BSc Philosophy and Economics</b>	VL51	3 years	AAA	36
<b>BSc Philosophy and Economics with Study Abroad</b>	VL54	4 years	AAA	36
<b>MSc Economics with Innovation</b>	L104	4 years	A*AA	38
<b>EDUCATION</b>				
<b>BSc Education Studies</b>	X300	3 years	ABB	32
<b>BSc Education Studies with Study Abroad</b>	X304	4 years	ABB	32
<b>BSc Psychology in Education</b>	X301	3 years	ABB	32
<b>BSc Psychology in Education with Study Abroad</b>	X305	4 years	ABB	32

Course	UCAS code	Length	Typical A-level offer	Typical IB offer
<b>ELECTRICAL AND ELECTRONIC ENGINEERING</b>				
<b>BEng Electrical and Electronic Engineering</b>	H600	3 years	AAA	36
<b>BEng Electrical and Electronic Engineering with a Year in Industry</b>	†	4 years	AAA	36
<b>BEng Engineering Design</b>	H165	3 years	A*AA	38
<b>BEng Mechanical and Electrical Engineering</b>	H361	3 years	AAA	36
<b>MEng Engineering Design</b>	H160	4 years	A*AA	38
<b>MEng Electrical and Electronic Engineering</b>	H606	4 years	AAA	36
<b>MEng Electrical and Electronic Engineering with a Year in Industry</b>	†	5 years	AAA	36
<b>MEng Electrical and Electronic Engineering with Innovation</b>	H604	4 years	AAA	36
<b>MEng Electrical and Electronic Engineering with Study Abroad</b>	†	4 years	AAA	36
<b>MEng Electrical and Electronic Engineering with Study Abroad in a Modern Language</b>	H605	4 years	AAA	36
<b>MEng Mechanical and Electrical Engineering</b>	H360	4 years	AAA	36
<b>MEng Mechanical and Electrical Engineering with a Year in Industry</b>	†	5 years	AAA	36
<b>ENGINEERING DESIGN</b>				
<b>MEng Engineering Design with Study in Industry</b>	H150	5 years	A*AA	38
<b>ENGINEERING MATHEMATICS</b>				
<b>BEng Engineering Mathematics</b>	G162	3 years	AAA	36
<b>MEng Engineering Mathematics</b>	G161	4 years	AAA	36
<b>MEng Engineering Mathematics with a Year in Industry</b>	†	5 years	AAA	36
<b>MEng Engineering Mathematics with Study Abroad</b>	G160	4 years	AAA	36

Course	UCAS code	Length	Typical A-level offer	Typical IB offer
<b>ENGLISH</b>				
<b>BA English</b>	Q300	3 years	AAA	36
<b>BA English with Study Abroad</b>	Q301	4 years	AAA	36
<b>BA English and Classical Studies</b>	QQ38	3 years	AAA	36
<b>BA English and French</b>	QR31	4 years	AAA	36
<b>BA English and German</b>	QR32	4 years	AAA	36
<b>BA English and History</b>	QV31	3 years	AAA	36
<b>BA English and Italian</b>	QR33	4 years	AAA	36
<b>BA English and Philosophy</b>	QV35	3 years	AAA	36
<b>BA English and Portuguese</b>	QR35	4 years	AAA	36
<b>BA English and Russian</b>	QR37	4 years	AAA	36
<b>BA English and Spanish</b>	QR34	4 years	AAA	36
<b>BA Film and English</b>	6T3X	3 years	AAA	36
<b>BA Theatre and English</b>	4CC8	3 years	AAA	36
<b>ENVIRONMENTAL GEOSCIENCE</b>				
<b>BSc Environmental Geoscience</b>	F640	3 years	ABB	32
<b>MSc Environmental Geoscience</b>	F641	4 years	ABB	32
<b>MSc Environmental Geoscience with Study Abroad</b>	F644	4 years	ABB	32
<b>FILM AND TELEVISION</b>				
<b>BA Film and English</b>	6T3X	3 years	AAA	36
<b>BA Film and French</b>	2LK6	4 years	AAB	34
<b>BA Film and German</b>	4F29	4 years	AAB	34
<b>BA Film and Italian</b>	4L92	4 years	AAB	34
<b>BA Film and Portuguese</b>	4PP8	4 years	AAB	34
<b>BA Film and Spanish</b>	L288	4 years	AAB	34
<b>BA Film and Television</b>	4M5N	3 years	AAB	34
<b>BA Theatre and Film</b>	4KDU	3 years	AAB	34
<b>MArts Film and Television with Innovation</b>	4M50	4 years	AAB	34

Course	UCAS code	Length	Typical A-level offer	Typical IB offer
<b>FRENCH</b>				
<b>BA Modern Languages</b>	R900	4 years	ABB	32
<b>BA Comparative Literatures and Cultures and French</b>	QR38	4 years	ABB	32
<b>BA English and French</b>	QR31	4 years	AAA	36
<b>BA Film and French</b>	2LK6	4 years	AAB	34
<b>BA History and French</b>	VR11	4 years	AAA	36
<b>BA History of Art and French</b>	VR31	4 years	ABB	32
<b>BA International Business Management and French</b>	NR11	4 years	AAA	36
<b>BA Music and French</b>	WR31	4 years	AAB	34
<b>BA Philosophy and French</b>	RV15	4 years	AAB	34
<b>BA Politics and French</b>	RL12	4 years	AAB	34
<b>BA Theatre and French</b>	W43F	4 years	AAB	34
<b>LLB Law and French</b>	MR11	4 years	A*AA	38
<b>GEOGRAPHY</b>				
<b>BSc Geography</b>	F800	3 years	AAA	36
<b>BSc Geography with Quantitative Research Methods</b>	F802	3 years	AAA	36
<b>BSc Geography with Study Abroad</b>	09F4	4 years	AAA	36
<b>BSc Geography with Study Abroad in a Modern Language</b>	F801	4 years	AAA	36
<b>MSc Geography with Innovation</b>	F805	4 years	AAA	36
<b>MSc Geography with Quantitative Research Methods</b>	F804	4 years	AAA	36
<b>GEOLOGY</b>				
<b>BSc Geology</b>	F600	3 years	ABB	32
<b>MSc Geology</b>	F603	4 years	ABB	32
<b>MSc Geology with Study Abroad</b>	F609	4 years	ABB	32

Course	UCAS code	Length	Typical A-level offer	Typical IB offer
<b>GERMAN</b>				
<b>BA Modern Languages</b>	R900	4 years	ABB	32
<b>BA Comparative Literatures and Cultures and German</b>	QR40	4 years	ABB	32
<b>BA English and German</b>	QR32	4 years	AAA	36
<b>BA Film and German</b>	4F29	4 years	AAB	34
<b>BA History and German</b>	VR12	4 years	AAA	36
<b>BA History of Art and German</b>	VR32	4 years	ABB	32
<b>BA International Business Management and German</b>	NR12	4 years	AAA	36
<b>BA Music and German</b>	WR32	4 years	AAB	34
<b>BA Philosophy and German</b>	RV25	4 years	AAB	34
<b>BA Politics and German</b>	RL22	4 years	AAB	34
<b>BA Theatre and German</b>	21C7	4 years	AAB	34
<b>LLB Law and German</b>	MR12	4 years	A*AA	38
<b>HISTORY</b>				
<b>BA English and History</b>	QV31	3 years	AAA	36
<b>BA History</b>	V100	3 years	AAA	36
<b>BA History with Study Abroad</b>	V102	4 years	AAA	36
<b>BA History and French</b>	VR11	4 years	AAA	36
<b>BA History and German</b>	VR12	4 years	AAA	36
<b>BA History and Italian</b>	VR13	4 years	AAA	36
<b>BA History and Portuguese</b>	VR15	4 years	AAA	36
<b>BA History and Russian</b>	VR17	4 years	AAA	36
<b>BA History and Spanish</b>	VR14	4 years	AAA	36
<b>MArts History with Innovation</b>	V104	4 years	AAA	36

Course	UCAS code	Length	Typical A-level offer	Typical IB offer
<b>HISTORY OF ART</b>				
<b>BA History of Art</b>	V350	3 years	ABB	32
<b>BA History of Art and French</b>	VR31	4 years	ABB	32
<b>BA History of Art and German</b>	VR32	4 years	ABB	32
<b>BA History of Art and Italian</b>	VR33	4 years	ABB	32
<b>BA History of Art and Portuguese</b>	VR35	4 years	ABB	32
<b>BA History of Art and Russian</b>	VR37	4 years	ABB	32
<b>BA History of Art and Spanish</b>	VR34	4 years	ABB	32
<b>INNOVATION</b>				
<b>MArts Anthropology with Innovation</b>	XD50	4 years	AAB	34
<b>MArts Film and TV with Innovation</b>	4M50	4 years	AAB	34
<b>MArts History with Innovation</b>	V104	4 years	AAA	36
<b>MArts Music with Innovation</b>	W304	4 years	AAB	34
<b>MArts Theatre with Innovation</b>	2Q50	4 years	AAB	34
<b>MEng Computer Science with Innovation</b>	G404	4 years	A*AA	38
<b>MEng Electrical and Electronic Engineering with Innovation</b>	H604	4 years	AAA	36
<b>MSci Economics with Innovation</b>	L104	4 years	A*AA	38
<b>MSci Geography with Innovation</b>	F805	4 years	AAA	36
<b>MSci Business and Management with Innovation</b>	N204	4 years	AAA	36

Course	UCAS code	Length	Typical A-level offer	Typical IB offer
<b>MSci Physics with Innovation</b>	F306	4 years	A*AA	38
<b>MSci Psychology with Innovation</b>	C804	4 years	A*AA	38
<b>INTERNATIONAL BUSINESS MANAGEMENT</b>				
<b>BA International Business Management and French</b>	NR11	4 years	AAA	36
<b>BA International Business Management and German</b>	NR12	4 years	AAA	36
<b>BA International Business Management and Spanish</b>	NR14	4 years	AAA	36
<b>BSc International Business Management</b>	N120	3 years	AAA	36
<b>BSc International Business Management with Study Abroad</b>	N121	4 years	AAA	36
<b>BSc International Business Management with Study Abroad in a Modern Language</b>	N122	4 years	AAA	36
<b>ITALIAN</b>				
<b>BA Modern Languages</b>	R900	4 years	ABB	32
<b>BA Comparative Literatures and Cultures and Italian</b>	QR41	4 years	ABB	32
<b>BA English and Italian</b>	QR33	4 years	AAA	36
<b>BA Film and Italian</b>	4L92	4 years	AAB	34
<b>BA History and Italian</b>	VR13	4 years	AAA	36
<b>BA History of Art and Italian</b>	VR33	4 years	ABB	32
<b>BA Music and Italian</b>	WR33	4 years	AAB	34
<b>BA Philosophy and Italian</b>	RV35	4 years	AAB	34
<b>BA Politics and Italian</b>	RL32	4 years	AAB	34
<b>BA Theatre and Italian</b>	22FF	4 years	AAB	34

Course	UCAS code	Length	Typical A-level offer	Typical IB offer
<b>LAW</b>				
<b>LLB Law</b>	M100	3 years	A*AA	38
<b>LLB Law and French</b>	MR11	4 years	A*AA	38
<b>LLB Law and German</b>	MR12	4 years	A*AA	38
<b>LLB Law and Spanish</b>	MR13	4 years	A*AA	38
<b>LLB Law with Study Abroad</b>	†	4 years	A*AA	38
<b>LLB Law with Study in Continental Europe</b>	†	4 years	A*AA	38
<b>LIBERAL ARTS</b>				
<b>BA Liberal Arts</b>	2ZB7	3 years	AAA	36
<b>MLibArts Liberal Arts with Study Abroad</b>	2T23	4 years	AAA	36
<b>MARKETING</b>				
<b>BSc Marketing</b>	N500	3 years	AAA	36
<b>BSc Marketing with Study Abroad</b>	N504	4 years	AAA	36
<b>BSc Marketing with Study Abroad in a Modern Language</b>	N501	4 years	AAA	36
<b>MATHEMATICS</b>				
<b>BSc Data Science</b>	G1G5	3 years	A*AA	38
<b>BSc Data Science with a Year in Industry</b>	G1G6	4 years	A*AA	38
<b>BSc Economics and Mathematics</b>	LG11	3 years	A*A*A	40
<b>BSc Mathematics</b>	G100	3 years	A*A*A	40
<b>BSc Mathematics and Computer Science</b>	GG14	3 years	A*A*A	40
<b>BSc Mathematics and Philosophy</b>	VG51	3 years	A*AA	38
<b>BSc Mathematics and Physics</b>	GFD3	3 years	A*AA	38
<b>BSc Mathematics with Statistics</b>	G1G3	3 years	A*A*A	40
<b>BSc Mathematics with Statistics for Finance</b>	G1G4	3 years	A*A*A	40

Course	UCAS code	Length	Typical A-level offer	Typical IB offer
<b>BSc Mathematics with Study Abroad in a Modern Language</b>	G101	4 years	A*A*A	40
<b>MEng Mathematics and Computer Science</b>	GG1K	4 years	A*A*A	40
<b>MSci Mathematics</b>	G103	4 years	A*A*A	40
<b>MSci Mathematics and Philosophy</b>	GV15	4 years	A*AA	38
<b>MSci Mathematics and Physics</b>	GFC3	4 years	A*AA	38
<b>MSci Mathematics with Statistics</b>	G1GH	4 years	A*A*A	40
<b>MSci Mathematics with Study Abroad</b>	G105	4 years	A*A*A	40
<b>MSci Mathematics with Study Abroad in a Modern Language</b>	G104	4 years	A*A*A	40
<b>MECHANICAL ENGINEERING</b>				
<b>BEng Mechanical Engineering</b>	H305	3 years	A*AA	38
<b>BEng Mechanical and Electrical Engineering</b>	H361	3 years	AAA	36
<b>MEng Mechanical Engineering</b>	H300	4 years	A*AA	38
<b>MEng Mechanical Engineering with a Year in Industry</b>	†	5 years	A*AA	38
<b>MEng Mechanical Engineering with Study Abroad</b>	†	4 years	A*AA	38
<b>MEng Mechanical and Electrical Engineering</b>	H360	4 years	AAA	36
<b>MEng Mechanical and Electrical Engineering with a Year in Industry</b>	†	5 years	AAA	36

Course	UCAS code	Length	Typical A-level offer	Typical IB offer
<b>MEDICINE</b>				
<b>MB ChB Medicine</b>	A100	5 years	AAA	36
<b>MODERN LANGUAGES</b>				
<b>BA Modern Languages</b>	R900	4 years	ABB	32
<b>MUSIC</b>				
<b>BA Music</b>	W300	3 years	AAB	34
<b>BA Music and French</b>	WR31	4 years	AAB	34
<b>BA Music and German</b>	WR32	4 years	AAB	34
<b>BA Music and Italian</b>	WR33	4 years	AAB	34
<b>BA Music and Portuguese</b>	WR35	4 years	AAB	34
<b>BA Music and Russian</b>	WR37	4 years	AAB	34
<b>BA Music and Spanish</b>	WR34	4 years	AAB	34
<b>MArts Music with Innovation</b>	W304	4 years	AAB	34
<b>NEUROSCIENCE</b>				
<b>BSc Neuroscience</b>	B140	3 years	AAA	36
<b>BSc Neuroscience with Study in Industry</b>	†	4 years	AAA	36
<b>MSci Neuroscience</b>	B141	4 years	AAA	36
<b>MSci Psychology and Neuroscience</b>	CB81	4 years	A*AA	38
<b>PALAEONTOLOGY AND EVOLUTION</b>				
<b>BSc Palaeontology and Evolution</b>	CF17	3 years	ABB	32
<b>MSci Palaeontology and Evolution</b>	CF16	4 years	ABB	32
<b>PHARMACOLOGY</b>				
<b>BSc Pharmacology</b>	B210	3 years	AAB	34
<b>BSc Pharmacology with Study in Industry</b>	B211	4 years	AAB	34
<b>MSci Pharmacology</b>	B212	4 years	AAB	34

Course	UCAS code	Length	Typical A-level offer	Typical IB offer
<b>PHILOSOPHY</b>				
<b>BA English and Philosophy</b>	QV35	3 years	AAA	36
<b>BA Philosophy</b>	V500	3 years	AAA	36
<b>BA Philosophy and French</b>	RV15	4 years	AAB	34
<b>BA Philosophy and German</b>	RV25	4 years	AAB	34
<b>BA Philosophy and Italian</b>	RV35	4 years	AAB	34
<b>BA Philosophy and Portuguese</b>	RV55	4 years	AAB	34
<b>BA Philosophy and Russian</b>	RV75	4 years	AAB	34
<b>BA Philosophy and Spanish</b>	RV45	4 years	AAB	34
<b>BA Philosophy and Theology</b>	VV56	3 years	AAA	36
<b>BSc Mathematics and Philosophy</b>	VG51	3 years	A*AA	38
<b>BSc Philosophy and Economics</b>	VL51	3 years	AAA	36
<b>BSc Philosophy and Economics with Study Abroad</b>	VL54	4 years	AAA	36
<b>BSc Philosophy and Politics</b>	VL52	3 years	AAA	36
<b>BSc Physics and Philosophy</b>	FV35	3 years	A*AA	38
<b>BSc Sociology and Philosophy</b>	LV35	3 years	AAB	34
<b>MSci Mathematics and Philosophy</b>	GV15	4 years	A*AA	38
<b>MSci Physics and Philosophy</b>	FVH5	4 years	A*AA	38

Course	UCAS code	Length	Typical A-level offer	Typical IB offer
<b>PHYSICS</b>				
BSc Mathematics and Physics	GFD3	3 years	A*AA	38
BSc Physics	F300	3 years	A*AA	38
BSc Physics and Philosophy	FV35	3 years	A*AA	38
BSc Physics with Astrophysics	F3F5	3 years	A*AA	38
MSci Mathematics and Physics	GFC3	4 years	A*AA	38
MSci Physics	F303	4 years	A*AA	38
MSci Physics and Philosophy	FVH5	4 years	A*AA	38
MSci Physics with Astrophysics	F3FM	4 years	A*AA	38
MSci Physics with Industrial Experience	F305	4 years	A*AA	38
MSci Physics with Innovation	F306	4 years	A*AA	38
MSci Physics with International Experience	F307	4 years	A*AA	38
MSci Physics with Study Abroad in a Modern Language	F304	4 years	A*AA	38
MSci Theoretical Physics	F340	4 years	A*AA	38
<b>PHYSICS WITH COMPUTING</b>				
BSc Physics with Computing	F330	3 years	A*AA	38
MSci Physics with Computing	F331	4 years	A*AA	38
MSci Physics with Computing with Industrial Experience	F334	4 years	A*AA	38

Course	UCAS code	Length	Typical A-level offer	Typical IB offer
<b>PHYSIOLOGICAL SCIENCE</b>				
BSc Physiological Science	B120	3 years	AAB	34
BSc Physiological Science with Study in Industry	†	4 years	AAB	34
MSci Physiological Science	B122	†	AAB	34
<b>POLITICS AND INTERNATIONAL RELATIONS</b>				
BA Politics and French	RL12	4 years	AAB	34
BA Politics and German	RL22	4 years	AAB	34
BA Politics and Italian	RL32	4 years	AAB	34
BA Politics and Portuguese	RL52	4 years	AAB	34
BA Politics and Russian	RL72	4 years	AAB	34
BA Politics and Spanish	RL42	4 years	AAB	34
BSc Economics and Politics	LL12	3 years	AAA	36
BSc Economics and Politics with Study Abroad	LL14	4 years	AAA	36
BSc Philosophy and Politics	VL52	3 years	AAA	36
BSc Politics and International Relations	L200	3 years	AAA	36
BSc Politics and International Relations with Study Abroad	L201	4 years	AAA	36
BSc Politics and Sociology	LL23	3 years	AAB	34
BSc Politics with Quantitative Research Methods	L202	3 years	AAA	36
BSc Politics with Quantitative Research Methods with Study Abroad	L204	4 years	AAA	36
BSc Social Policy and Politics	LL42	3 years	AAB	34
MSci Politics with Quantitative Research Methods	L203	4 years	AAA	36

Course	UCAS code	Length	Typical A-level offer	Typical IB offer
<b>PORTUGUESE</b>				
BA Modern Languages	R900	4 years	ABB	32
BA Comparative Literatures and Cultures and Portuguese	QR42	4 years	ABB	32
BA English and Portuguese	QR35	4 years	AAA	36
BA Film and Portuguese	4PP8	4 years	AAB	34
BA History and Portuguese	VR15	4 years	AAA	36
BA History of Art and Portuguese	VR35	4 years	ABB	32
BA Music and Portuguese	WR35	4 years	AAB	34
BA Philosophy and Portuguese	RV55	4 years	AAB	34
BA Politics and Portuguese	RL52	4 years	AAB	34
BA Theatre and Portuguese	R2D8	4 years	AAB	34
<b>PSYCHOLOGY</b>				
BSc Psychology	C801	3 years	A*AA	38
MSci Psychology with Innovation	C804	4 years	A*AA	38
MSci Psychology and Neuroscience	CB81	4 years	A*AA	38
<b>QUANTITATIVE RESEARCH METHODS (QRM)</b>				
BSc Childhood Studies with QRM	L522	3 years	ABB	32
BSc Criminology with QRM	M902	3 years	AAB	34
BSc Geography with QRM	F802	3 years	AAA	36
BSc Politics with QRM	L202	3 years	AAA	36
BSc Politics with QRM with Study Abroad	L204	4 years	AAA	36
BSc Social Policy with QRM	L402	3 years	AAB	34
BSc Sociology with QRM	L302	3 years	AAB	34

Course	UCAS code	Length	Typical A-level offer	Typical IB offer
<b>BSc Sociology with QRM with Study Abroad</b>				
	L304	4 years	AAB	34
MSci Childhood Studies with QRM	L523	4 years	ABB	32
MSci Criminology with QRM	M903	4 years	AAB	34
MSci Geography with QRM	F804	4 years	AAA	36
MSci Politics with QRM	L203	4 years	AAA	36
MSci Social Policy with QRM	L403	4 years	AAB	34
MSci Sociology with QRM	L303	4 years	AAB	34
<b>RELIGION AND THEOLOGY</b>				
BA Philosophy and Theology	VV56	3 years	AAA	36
BA Religion and Theology	V600	3 years	ABB	32
MARts Religion and Theology with Study Abroad	V601	4 years	ABB	32
<b>RUSSIAN</b>				
BA Modern Languages	R900	4 years	ABB	32
BA Comparative Literatures and Cultures and Russian	QR43	4 years	ABB	32
BA English and Russian	QR37	4 years	AAA	36
BA History and Russian	VR17	4 years	AAA	36
BA History of Art and Russian	VR37	4 years	ABB	32
BA Music and Russian	WR37	4 years	AAB	34
BA Philosophy and Russian	RV75	4 years	AAB	34
BA Politics and Russian	RL72	4 years	AAB	34
<b>SOCIAL POLICY</b>				
BSc International Social and Public Policy	L410	3 years	AAB	34
BSc International Social and Public Policy with Study Abroad	L411	4 years	AAB	34

Course	UCAS code	Length	Typical A-level offer	Typical IB offer
BSc Social Policy	L400	3 years	AAB	34
BSc Social Policy and Politics	LL42	3 years	AAB	34
BSc Social Policy and Sociology	LL43	3 years	AAB	34
BSc Social Policy with Criminology	LM49	3 years	AAB	34
BSc Social Policy with Quantitative Research Methods	L402	3 years	AAB	34
BSc Social Policy with Study Abroad	L404	4 years	AAB	34
MSci Social Policy with Quantitative Research Methods	L403	4 years	AAB	34
<b>SOCIOLOGY</b>				
BSc Politics and Sociology	LL23	3 years	AAB	34
BSc Social Policy and Sociology	LL43	3 years	AAB	34
BSc Sociology	L300	3 years	AAB	34
BSc Sociology and Philosophy	LV35	3 years	AAB	34
BSc Sociology with Quantitative Research Methods	L302	3 years	AAB	34
BSc Sociology with Quantitative Research Methods with Study Abroad	L304	4 years	AAB	34
BSc Sociology with Study Abroad	L301	4 years	AAB	34
MSci Sociology with Quantitative Research Methods	L303	4 years	AAB	34
<b>SPANISH</b>				
BA Modern Languages	R900	4 years	ABB	32
BA Comparative Literatures and Cultures and Spanish	QR39	4 years	ABB	32
BA English and Spanish	QR34	4 years	AAA	36

Course	UCAS code	Length	Typical A-level offer	Typical IB offer
BA Film and Spanish	L288	4 years	AAB	34
BA History and Spanish	VR14	4 years	AAA	36
BA History of Art and Spanish	VR34	4 years	ABB	32
BA International Business Management and Spanish	NR14	4 years	AAA	36
BA Music and Spanish	WR34	4 years	AAB	34
BA Philosophy and Spanish	RV45	4 years	AAB	34
BA Politics and Spanish	RL42	4 years	AAB	34
BA Theatre and Spanish	4D8C	4 years	AAB	34
LLB Law and Spanish	MR13	4 years	A*AA	38
<b>THEATRE</b>				
BA Theatre and English	4CC8	3 years	AAA	36
BA Theatre and Film	4KDU	3 years	AAB	34
BA Theatre and French	W43F	4 years	AAB	34
BA Theatre and German	21C7	4 years	AAB	34
BA Theatre and Italian	22FF	4 years	AAB	34
BA Theatre and Performance Studies	2Q3W	3 years	AAB	34
BA Theatre and Portuguese	R2D8	4 years	AAB	34
BA Theatre and Spanish	4D8C	4 years	AAB	34
MARts Theatre with Innovation	2Q50	4 years	AAB	34
<b>VETERINARY NURSING</b>				
BSc Veterinary Nursing and Companion Animal Behaviour	D313	4 years	BBC	29
<b>VETERINARY SCIENCE</b>				
BVSc Veterinary Science	D100	5 years	AAA	36
BVSc Veterinary Science: Accelerated Graduate Entry	D102	4 years	See online	

\*Entry by transfer

# POSTGRADUATE TAUGHT PROGRAMMES

Search for a postgraduate taught programme at [bristol.ac.uk/postgraduate](https://bristol.ac.uk/postgraduate)

Programme	Award(s)
FACULTY OF ARTS	
Anthropology	MA
Business Innovation*	MBI
Business Innovation and Entrepreneurship	MSc
Chinese-English Audiovisual Translation	MA
Chinese-English Translation	MA
Comparative Literatures and Cultures	MA
Composition of Music for Film and Television	MA
Creative Innovation and Entrepreneurship	MA
Creative Writing	MA
English Literature	MA
Environmental Humanities	MA
Film and Television	MA
History	MA
History of Art	MA
Immersive Arts (Virtual and Augmented Reality)	MA, PG Certificate, PG Diploma
Innovation and Entrepreneurship	MSc
Logic and Philosophy of Mathematics	MA
Medieval Studies	MA
Music	MA
Philosophy	MA, PG Diploma
Philosophy and History of Science	MA

Programme	Award(s)
Philosophy of Biological and Cognitive Sciences	MA
Philosophy of Physics	MA
Social Innovation and Entrepreneurship	MSc
Technology Innovation and Entrepreneurship	MSc
Translation	MA, PG Diploma
FACULTY OF ENGINEERING	
Advanced Composites	MSc
Advanced Microelectronic Systems Engineering	MSc
Aerial Robotics	MSc
Biorobotics	MSc
Communication Networks and Signal Processing	MSc
Computer Science (Conversion)	MSc
Cyber Security (Infrastructures Security)	MSc
Data Science	MSc
Data Science (Distance Learning)	MSc
Digital Health	MSc
Earthquake Engineering and Infrastructure Resilience	MSc
Engineering Mathematics	MSc
Engineering with Management	MSc
Financial Technology with Data Science	MSc
Image and Video Communications and Signal Processing	MSc
Immersive Technologies (Virtual and Augmented Reality)	MSc, PG Certificate, PG Diploma
Optical Communications and Signal Processing	MSc
Optoelectronic and Quantum Technologies	MSc
Robotics	MSc
Water and Environmental Management	MSc
Wireless Communications and Signal Processing	MSc

Programme	Award(s)
FACULTY OF HEALTH SCIENCES	
Cardiovascular Perfusion (Distance Learning)	MSc
Clinical Oral Surgery	PG Certificate
Dental Implantology	MSc
Epidemiology	MSc
Global Wildlife Health and Conservation	MSc
Health Economics and Health Policy Analysis	MSc
Health Sciences Research	MRes
Healthcare Improvement	PG Certificate
Healthcare Management	MSc, PG Certificate, PG Diploma
Medical Statistics and Health Data Science	MSc
Molecular Neuroscience	MSc
Oral Medicine	MSc
Orthopaedic Research Methods and Evidence-Based Medicine	MSc
Perfusion Science	MSc, PG Certificate
Periodontology	MSc
Public Health	MSc
Reproduction and Development	MSc, PG Certificate, PG Diploma
Stem Cells and Regeneration	MSc, PG Certificate, PG Diploma
Teaching and Learning for Health Professionals	MSc, PG Certificate, PG Diploma
Translational Cardiovascular Medicine	MSc, PG Certificate, PG Diploma
FACULTY OF LIFE SCIENCES	
Applied Neuropsychology	MSc, PG Diploma
Applied Neuropsychology (Distance Learning)	MSc, PG Diploma
Bioinformatics	MSc
Biomedical Sciences Research	MSc
Clinical Neuropsychology	MSc, PG Diploma
Clinical Neuropsychology Practice	PG Certificate
Science Communication for a Better Planet	MSc
Theoretical and Practical Clinical Neuropsychology	PG Diploma

Programme	Award(s)
FACULTY OF SCIENCE	
Climate Change Science and Policy	MSc
Environmental Modelling and Data Analysis	MSc
Environmental Policy and Management	MSc
Geographic Data Science and Spatial Analytics	MSc
Global Development and Environment	MSc
Mathematical Sciences	MSc
Nuclear Science and Engineering	MSc
Palaeobiology	MSc
Scientific Computing with Data Science	MSc
Volcanology	MSc
FACULTY OF SOCIAL SCIENCES AND LAW	
Advanced Quantitative Methods	MRes
Contemporary Identities	MSc
Development and Security	MSc
East Asian Development and the Global Economy	MSc
Economics	Graduate Diploma, MRes, MSc
Economics and Finance	MSc
Economics, Finance and Management	MSc
Economics with Data Science	MSc
Education	MRes
Education (Inclusive Education)	MSc
Education (Leadership and Policy)	MSc
Education (Learning, Technology and Society)	MSc
Education (Mathematics Education)	MSc
Education (Neuroscience and Education)	MSc
Education (Open Pathway)	MSc
Education (Policy and International Development)	MSc
Education (Secondary)	PGCE
Education (Education and Climate Change)	MSc

Programme	Award(s)
Education (Teaching and Learning)	MSc
Gender and International Relations	MSc
Global Political Economy	MRes
Human Geography: Society and Space	MSc
International Development	MSc
International Relations	MSc
International Security	MSc
Law	MA
Law (Banking and Finance Law)	LLM
Law (Commercial Law)	LLM
Law (Company Law and Corporate Governance)	LLM
Law (Employment, Work and Equality)	LLM
Law (General Legal Studies)	LLM
Law (Health, Law and Society)	LLM
Law (Human Rights Law)	LLM
Law (International Commercial Law)	LLM
Law (International Law)	LLM
Law (International Law and International Relations)	LLM
Law (Labour Law and Corporate Governance)	LLM
Law (Law and Globalisation)	LLM
Law (Public Law)	LLM
Law (Environment, Sustainability and Business)	LLM
Law (Innovation and Technology)	LLM
Nutrition, Physical Activity and Public Health	MSc
Policy Research	MSc
Psychology of Education BPS	MSc
Public Policy	MSc
Security, Conflict and Human Rights	MRes
Social and Cultural Theory	MSc
Social Science Research Methods (Politics)	MSc
Social Science Research Methods (Sociology)	MSc
Social Work	MSc

Programme	Award(s)
Social Work Research	MSc
Society, Politics and Climate Change	MSc
Socio-Legal Studies	MSc
Sociology	MSc
Sustainable Futures	MSc
Teaching English to Speakers of Other Languages (TESOL)	MSc
BUSINESS SCHOOL PROGRAMMES	
Accounting and Finance	MSc
Accounting, Finance and Management	MSc
Banking, Regulation and Financial Stability	MSc
Business Analytics	MSc
Finance and Investment	MSc
Financial Technology	MSc
Global Management (Online)	MSc
Global Operations and Supply Chain Management	MSc
Human Resource Management and the Future of Work	MSc
International Business and Strategy: Global Challenges	MSc
Management	MSc
Management (CSR and Sustainability)	MSc
Management (Digitalisation and Big Data)	MSc
Management (Entrepreneurship and Innovation)	MSc
Management (International Business)	MSc
Management (International Human Resource Management)	MSc
Management (Marketing)	MSc
Management (Project Management)	MSc
Marketing	MSc
Social Science Research Methods (Management)	MSc

\*Subject to approval

POSTGRADUATE RESEARCH PROGRAMMES

Search for a postgraduate research programme at [bristol.ac.uk/postgraduate](https://bristol.ac.uk/postgraduate)

Programme	Award(s)
FACULTY OF ARTS	
Anthropology and Archaeology	PhD; MPhil
Business Innovation	DBI
Classics and Ancient History	PhD; MPhil
Comparative Literatures and Cultures	PhD; MPhil
Creative Writing	PhD; MPhil
English Literature	PhD; MPhil
Film and Television	PhD; MPhil
French	PhD; MPhil
German	PhD; MPhil
Hispanic, Portuguese and Latin American Studies	PhD; MPhil
History	PhD; MPhil
History of Art	PhD; MPhil
Innovation and Entrepreneurship	PhD; MPhil
Italian	PhD; MPhil
Medieval Studies	PhD; MPhil
Music	PhD; MPhil; MMus
Philosophy	PhD; MPhil
Religion and Theology	PhD; MPhil
Russian	PhD; MPhil
Theatre and Performance	PhD; MPhil
Translation	PhD; MPhil
FACULTY OF ENGINEERING	
Aerospace Engineering	PhD; MSc by research
Civil Engineering	PhD; MSc by research
Computer Science	PhD; MSc by research
Electrical and Electronic Engineering	PhD; MSc by research

Programme	Award(s)
Engineering Mathematics	PhD
Mechanical Engineering	PhD; MSc by research
FACULTY OF HEALTH SCIENCES	
Oral and Dental Sciences	PhD; MSc by research
Population Health Sciences	
	PhD; MD; MSc by research
Translational Health Sciences	
	PhD; MD; DSc; MSc by research
Veterinary Sciences	PhD; MSc by research
FACULTY OF LIFE SCIENCES	
Biochemistry	PhD; MSc by research
Biological Sciences	PhD; MSc by research
Cellular and Molecular Medicine	PhD; MD; MSc by research
Physiology, Pharmacology and Neuroscience	PhD; MSc by research
Psychology	PhD; MSc by research
FACULTY OF SCIENCE	
Chemistry	PhD; MSc by research
Earth Sciences	PhD; MSc by research
Geographical Sciences (Physical Geography)	PhD
Global Environmental Challenges	MSc by research
Mathematics	PhD; MSc by research
Physics	PhD; MSc by research
FACULTY OF SOCIAL SCIENCES AND LAW	
Accounting and Finance	PhD
Advanced Quantitative Methods	PhD
Disability Studies	PhD
East Asian Studies	PhD
Economics	PhD
Education	PhD
Exercise, Nutrition and Health	PhD
Geographical Sciences (Human Geography)	PhD
Global Political Economy	PhD
Health and Wellbeing	PhD

Programme	Award(s)
Law	PhD
Management	PhD
Politics	PhD
Security, Conflict and Human Rights	PhD
Social Policy	PhD
Social Work	PhD
Sociology	PhD
Sustainable Futures	PhD
FUNDED COHORT-BASED DOCTORAL TRAINING	
Advanced Composites	PhD
Aerosol Science	PhD
Composites Manufacture	EngD
Computational Statistics and Data Science: Compass	PhD
Cyber Security (TIPS at Scale)	PhD
Digital Health and Care	PhD
Dynamic Molecular Cell Biology (Wellcome Trust)	PhD
Education: Learning, Leadership and Policy	EdD
Educational Psychology	DEdPsy
Future Innovation in Non-Destructive Evaluation	PhD; EngD
Great Western Four+ Doctoral Training Partnership (NERC)	PhD
Integrative Cardiovascular Science (BHF)	PhD
Interactive Artificial Intelligence	PhD
Molecular, Genetic and Lifecourse Epidemiology (Wellcome Trust)	PhD
Quantum Engineering	PhD
Robotics and Autonomous Systems	PhD
South West Biosciences (SWBio) Doctoral Training Partnership (BBSRC)	PhD
South West Doctoral Training Partnership (ESRC)	PhD
Technology Enhanced Chemical Synthesis	PhD



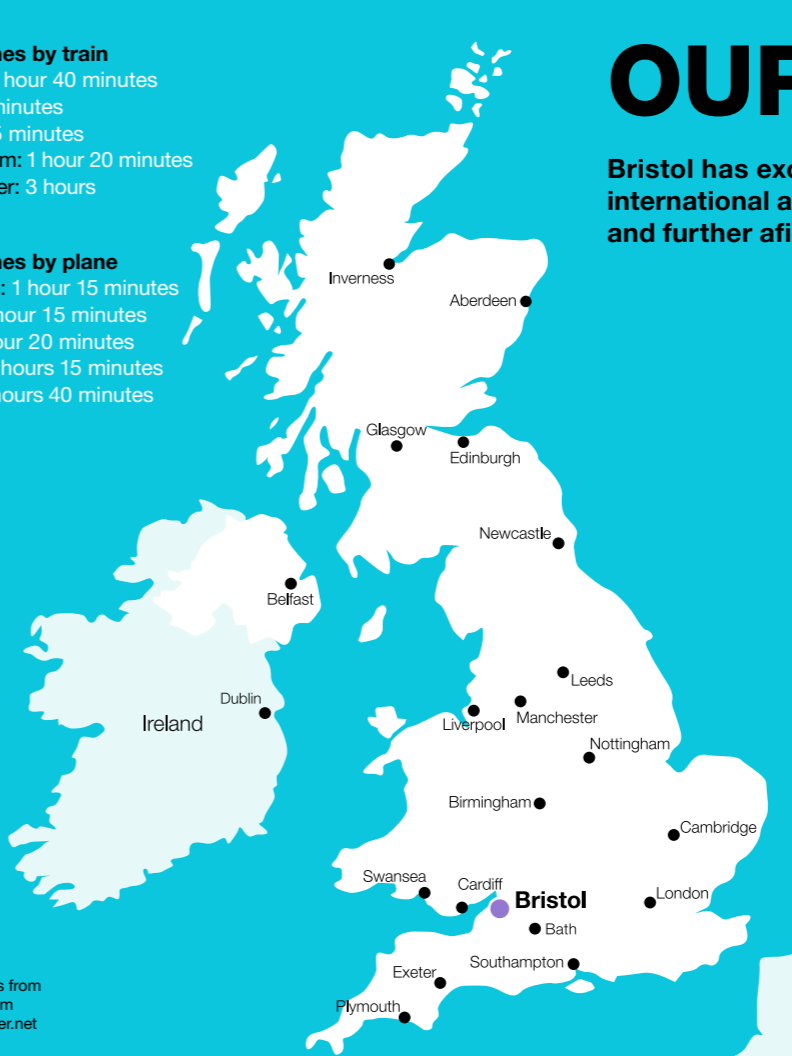
Travel times by train

London: 1 hour 40 minutes  
Bath: 15 minutes  
Cardiff: 55 minutes  
Birmingham: 1 hour 20 minutes  
Manchester: 3 hours



Travel times by plane

Edinburgh: 1 hour 15 minutes  
Dublin: 1 hour 15 minutes  
Paris: 1 hour 20 minutes  
Madrid: 2 hours 15 minutes  
Rome: 2 hours 40 minutes



Average travel times from [www.thetrainline.com](https://www.thetrainline.com) and [www.skyscanner.net](https://www.skyscanner.net) April 2023

OUR LOCATION

Bristol has excellent transport links and an international airport. It's easy to explore the UK and further afield by train, bus and plane.

Notes

If you need all or part of this publication in an alternative format, please contact us:  
Tel: **+44 (0)117 394 1649**  
Email: **[marketing-team@bristol.ac.uk](mailto:marketing-team@bristol.ac.uk)**

This prospectus contains information for students planning to start university in autumn 2024. We have made every effort to ensure all details are correct at the time of going to press (August 2023). However, since this information is subject to change, check the University's website for the latest updates: [bristol.ac.uk](https://bristol.ac.uk)

**Design:** The Chase Creative Consultants  
**Print:** Gemini West  
**Photography and artwork:** Andre Pattenden, Bhagesh Sachania, Bristol Comedy Garden, Christy Nunns, Craig Auckland, Dan Rowley, Destination Bristol, Fotohaus, Jenny Hooton, Jon Craig, Jon Jerrome, Jones Millbank, Liz Eve, Nick Riddle, Paul Box, Phil Riley.

© University of Bristol 2023


# INTERNATIONAL GUIDE 2024/25


## Contact us:

Email: [support@international.bristol.ac.uk](mailto:support@international.bristol.ac.uk)


Tel: +44 (0)117 205 2644

WhatsApp: +44 738 561 7841

 Twitter: @BristolUni

 Instagram: universityofbristol

 Weibo: bristol

 Facebook: bristoluniversity

 YouTube: UniversityOfBristol

 TikTok: @officialbristoluni



[bristol.ac.uk/international-24](https://bristol.ac.uk/international-24)

